

PT *Enforcer*

PT-Enforcer Introduction

It is very important that before using the PT-Enforcer paintball marker, every individual that will be using the marker read this entire manual for proper operation, safety and handling. The most important understanding of the paintball marker is to realize that it is not a toy. Caution should be used at all times.

Safety and Handling

Always treat the paintball marker as if it were loaded. When handling the marker, always keep your fingers or any other objects away from the trigger assembly to avoid accidental discharges. Make sure when carrying or transporting the marker, to keep the muzzle pointed in the downward direction. Furthermore, always have a barrel plug in place and keep the safety on. until you are ready to operate the marker. It is very important to have the proper paintball protection before going to the paintball field for play. This includes and is not limited to eye, head, throat, and body protection.

Preparing PT-Enforcer for Usage

The PT-Enforcer is designed to use 12 gram C02 cartridge for the proper function of the blow back system. The PT-Enforcer is designed to use 12 gram C02

cartridge that are designed for the paintball industry. Please purchase your cartridge from stores specializing in paintball products and make sure the cartridge they are selling to you are "American Industry Standards."

Cleaning and Maintenance

After playing or storing the gun for any period of time, proper maintenance is necessary for correct operation and peak performance. However BEFORE attempting any assembling make sure that the loader and all C02 sources have been disconnected and the gun is NOT pressurized. Make sure the breech of the gun is clear of any debris or paintballs. Proper maintenance includes cleaning and lubricating the PT-Enforcer before playing or storing the marker. It is imperative that the PT-Enforcer be properly lubricated and kept free of debris and dirt to eliminate any friction that would prevent proper operation. When using lubricants, use only if they do not contribute to the deterioration of parts inside the PT-Enforcer. It is recommended that you use Teflon or Silicone based lubricants. You begin cleaning only after the gun has been depressurized. Remove C02 cartridge. Then lubricate the threads with an extremely thin layer of lubricant. It is very important to keep the barrel clean as it affects the accuracy of the PT-Enforcer.

Field Stripping

(Be sure to have the schematic drawing available as a reference.)

You begin field stripping only after the gun has been depressurized

1. To properly field strip the PT-Enforcer you will need the alien wrenches that came with your marker. Also, make sure that the PT-Enforcer is uncocked, by squeezing the trigger. making sure no foreign objects or paintballs are in the breech.
2. Once the PT-Enforcer is uncocked you can loosen and remove the top screw numbered 32 from the rear of the marker. The bolt plug (part @10) will now come off.
3. Then remove the velocity adjuster plug (part @20), be careful, it is under pressure from the main spring. Loosen the remaining 2 screws also labelled @32 from the lower portion of the marker receiver. Hold the plug as you unscrew. Next remove the main spring and spring guide. Then carefully align the activating pin (item 13) and remove. This will now allow the hammer to be removed.
4. By tilling the gun. the bolt and hammer will now come out. Note: Watch as the holtand hammer come out to see how they join with the connecting pin (part @7)

5. It is now possible to clean the upper part of the receiver, including the breech and power feed tube area. After cleaning the upper frame area with mild detergent, the bolt and hammer should be lightly lubricated (using Teflon or silicone based lubricants). Do not over lube.
6. To reassemble, take the bolt and hammer and join together using the connecting pin. Point the PT-Enforcer toward the ground and slide the bolt and hammer in their respective holes until they stop. You will notice that they are not as far in as they should be.
7. At this point, apply slight pressure to the back of the hammer and squeeze the trigger. The bolt and hammer should now slide all the way in.
8. Screw in the bolt plug (part # 10). Then place the bumper (part @17). and activating pin (@13) into the receiver as indicated in the schematic. Carefully slide the main spring through the bumper and activating pin (this part is tricky). You will have to turn the activating pin to align the main spring with the hole in the activating pin.
9. Place the spring guide (part @18) into the velocity adjuster plug (part @20) and push into receiver. There will be pressure as the spring compresses.
10. Hold securely. and tighten the remaining two screws (item @32) back into the lower. rear portion of the receiver as indicated on the schematic.

Fine Tuning

Velocity Adjustment- Varying the Speed of the Paintball - With the PT-Enforcer pointed in the downward direction rotate the velocity screw (part#21) clockwise. This increases the mainspring tension and increases the velocity. Turning the velocity screw counter-clockwise decreases the pressure on the mainspring and decreases the momentum gained by the hammer. In doing so there is a decrease of gas flow, causing a decrease of velocity. Once the velocity is set, take the small allen wrench supplied and lock the velocity into place by turning item #21A clockwise.

Troubleshooting

1. If gun auto-triggers or fires and does not re-cock

A. Check grip frame screws and see if they are loose.

B. Check CO2 cartridge, it may be low on CO2.

C. Make sure the hammer is well lubricated. (Bolt and hammer)

2. Ball Breakage

A. Check the quality and age of the paintballs were excessive breakage has occurred.

B. Check the ball detent pin. (Part #26) If detent pin does not protrude into the inside diameter of the breech, the gun may double feed. this will cause the gun to

chop balls. To correct this problem, replace detent pin. The best position found for ball detent adjustment was to have the rubber level with the metal plate on the left and 1/16 of an inch up on the right. This is based on using the metal plate (#25) as the guide.

C. Excessively high velocity may also cause paintball breakage.

D. Check the front of the bolt for nicks or burs. Replace if necessary.

3. Air Leaks

A. If air leaks from the barrel: Replace cup seal. (Part #45)

4. Velocity Problems

A. High Velocity:

1. Turn velocity adjuster (Part #1 I) counter clockwise.

If the velocity screw has been turned to the point at which it comes out of the velocity adjuster plug and velocity is still high, then.

2. cut main spring (part #6) by one or two rings, if problem remains cut additional rings, one at a time.

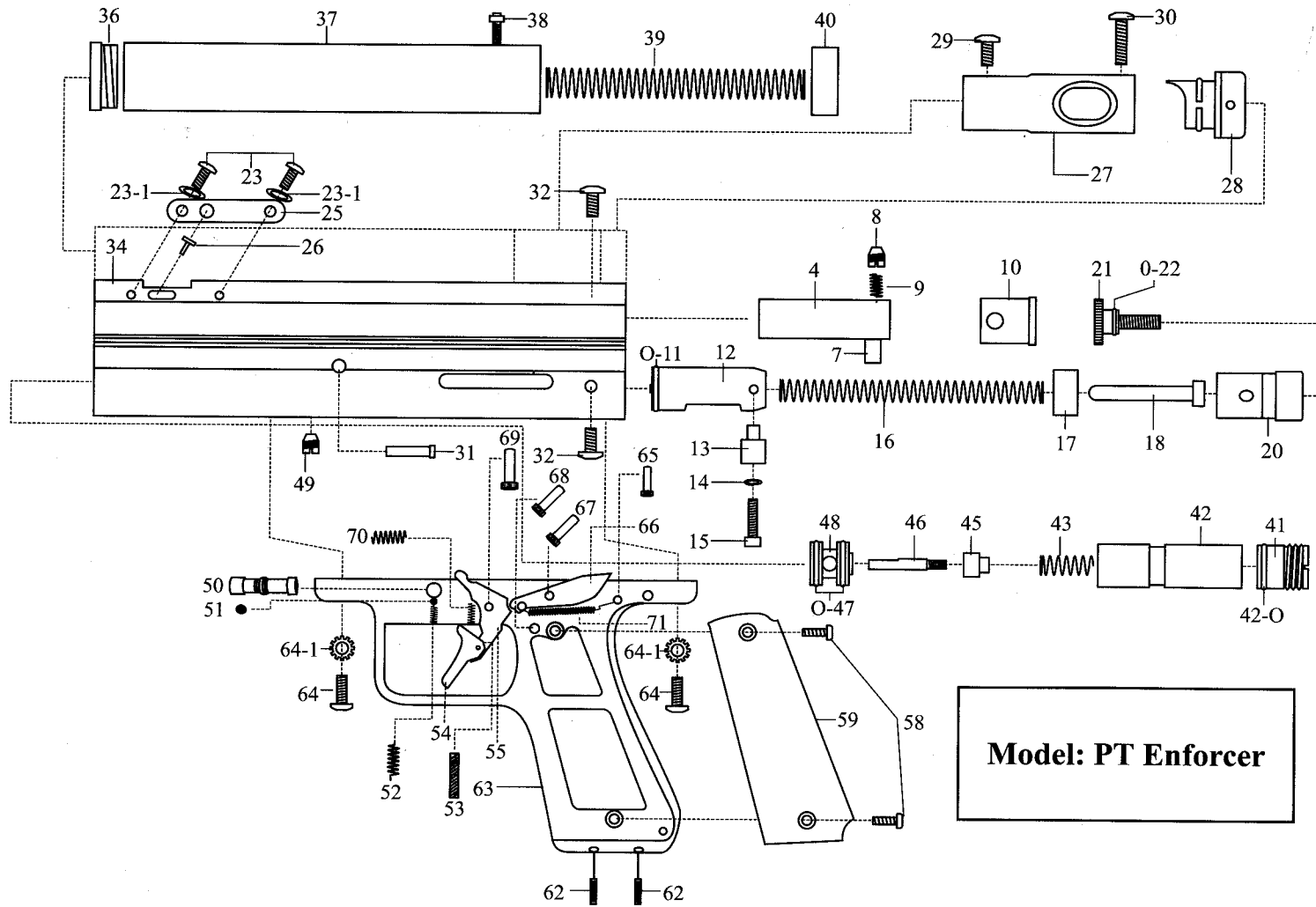
B. Low Velocity:

1. Turn velocity adjuster (Part @21) clockwise. If the velocity screw has been screwed in completely and velocity continues to be low. the main Spring (Part ff\6) will need to be replaced with a longer or stiffer spring.

C. Inconsistent Velocity:

1. Remove CO₂ filter.

2. Remove grip frame and tighten valve retaining screw. (Part @49)



Model: PT Enforcer